



Second Annual Helmsman Auction



# On Property Ram Sale

326 Heathfield Rd, Boorowa NSW

**Thursday, 29 September 2021**

**Sale commences at 1.00 pm**  
**Inspection from 10.30 am or by appointment**

*40 Poll Merino Rams on offer*

*Light lunch & refreshments available*



**@heathfieldpollmerinos**

**heathfieldpollmerinos.com**

## Selling Agents:



**Andrew Miller**  
**0428 437 068**

**Adele Smith**  
**0439 837 261**



**Simon Coddington**  
**0458 826 464**

## HEALTH STATUS

Accredited Brucellosis Free—Cert. No. 77023

Owner declared Foot Rot Free

Guidair Vaccinated

Scabby Guard

Vaccinated—6 in 1—22 August 2022

Shorn 19 April 2022

Note: All lambs on Heathfield have been Guidair Vaccinated since 2004.

## WOOL TESTS

Mid Side Sample wool tests supplied 31 August by

Riverina Wool Testers, Wagga Wagga.

**Sale Rams Average Micron (including Grade Rams): 17.5**

## NOTES

- **Rams dropped** 23 August to end of September 2021.
- Greasy Fleeceweight (GFW%) and Bodyweight (BW%) percentages are provided to allow comparison within this sale ram group.
- **BW%** is calculated with the average bodyweight of the sale ram group being 100%. Bodyweights were taken 26/9/22.
- **GFW%** is data from the whole drop of ram lambs at shearing, where 100% is the average. Please use it with discretion, as a guide only. Because of the young age of the rams when they were fleece weighed and the 5 week spread of lambing, coupled with the fact that some sheep mature earlier than others, figures may not be of high accuracy.
- Our rams are run under **commercial conditions** with no shedding or special preparation.
- All care has been taken with the **figures** in this document, however they may not be repeatable.

# General Information

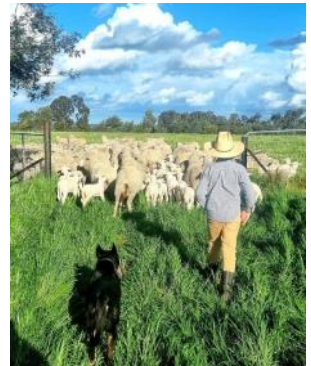
The information below is provided to give clients a better understanding of what we are doing and why.

(Often ram sale catalogues provide a ram's tag number but very little other information regarding the ram or why he was used in the stud.)

The decisions we make regarding taking our sheep forward are based on commercial reality, and progeny testing and measurement of highly heritable traits in the paddocks of Heathfield.

## Our breeding aims

- Efficient sheep: very profitable at both a \$/ha and \$/head perspective
- High fertility sheep
- Elite quality, long stapled, fine micron, heavy cutting wools
- Sheep with carcass traits of meaty hind quarters and wide hips
- Sheep with versatility that have completely commercially balanced traits



*Steve is always happy for a yarn*

**Enquiries to Vendor:**

**Steve Jarvis 0427 853 528**

**steve.jarvis@bigpond.com**

## Our ewe base

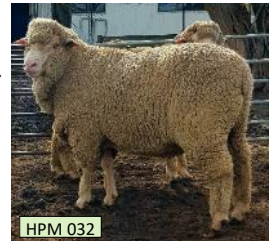
Ewe base origins:

- Late 80's Gum Hill and East Bungaree CFA ewes purchased in consecutive years from South Australia. These were purchased to form a positive base of highly fertile sheep with terrific carcass that cut a lot of wool.
- Looking to refine those, Barrackville and Yalgoo fine wool ewes were purchased through the 90's and introduced to start reducing micron in combination with Pastora genetics. (For quite a number of years we reduced our average micron by 0.5 per year while improving cut and wool quality.)
- In the 2000's Pastora CFA ex stud ewes were purchased enhancing the above in conjunction with Pastora ram genetics.

In recent years Rogara and Greenland sires have been a major, very positive influence. The genetics we have developed are influencing our ewe base. Into the future we will cherry pick the best sires we can find to continue our breeding aims.

## Sire influences

Pastora genetics have been a very positive influence over a long period of time. Eight years ago the decision was made to cherry pick rams from various bloodlines that we believed would enhance our genetics and move to the type we envisioned.



Researching and considering various poll merino genetics from around Australia is a never-ending job. Our promise to current and prospective clients is to never stop striving to increase the profitability of the genetics we offer.



## 2021 drop sale ram Sires

This information is provided as a guide to help in your selection process, and is based on our observations and data collected.

Sale Ram Tag	Sire ID	Sire Information
Purple	Rogara W137	An 18 micron sire purchased from Rogara in 2018. Selected because of his typical Rogara traits of heavy cutting, bold crimping pearl white wool. W137 has consistently thrown progeny with great carcass, being plain bodied with great wools and long staple length.
Pink	HPM 20013	Sired by Rogara W137. Born a quad lamb and used because of this fact as an experiment. 20013's lambs have a high representation in the sale team compared to the number of rams he produced. A great sheep with his sons in the catalogue being consistently heavy cutters at fine microns with great carcass potential.
Pink	HPM 20005	Brother of 20013, he is a plain bodied ram with great staple length of excellent quality wool. He is one of our broader micron sires however, and his progeny are usually on the broader side of the scale as well.
Pink	HPM 17124	This ram goes back to our original sire purchased from Rogara - Y3242 who has had great influence here at Heathfield over many sheep. HPM 17124 is one of the finest micron rams we have produced and used to breed from. Testing 15.8 micron as a hip test, he still cuts fleece weights in the top 25% of our sire team. Again, great carcass and earlier maturity traits.
Please note: for consistency of results we believe rams from the Heathfield/Rogara line would be a very good choice.		

Sale Ram Tag	Sire ID	Sire Information
Orange	HPM 19051	<p>A grandson of a Bella Lana ram purchased in 2018. The line HPM 19051 belongs to has consistently produced heavy cutting sheep that are slightly broader of micron than our average.</p> <p>They seem to be, in our view, very prepotent in wool qualities. We however, see their value in producing great carcass shape, with plain bodies that reach adult weights relatively quickly without growing into huge, inefficient animals.</p> <p>In summary, 19051 progeny in this sale should deliver early maturity in their lambs and heavy fleeceweights with microns slightly above our general average.</p>
Dark Blue	HPM 20042 HPM 20053 Syndicate	<p>Sons of a Kamarooka Park Poll sire purchased in 2018. 20042 and 20053 have long staples of very bold crimping wools that have been inherited from their sire. Key traits the Kamarooka line appears to pass on with regularity are white long staples with fleeces that cut heavy.</p> <p>Carcass traits are again dominant in this line and their lambs seem to start slow and then really take off at about 5 months of age.</p> <p>This group of rams is probably best suited to be joined to ewes that are fine crimped and shorter of staple to improve both aspects, improve cut and carcass traits.</p>
Red	HPP	<p>Hurlstone Park Poll sire purchased in 2020. This sire has produced some very notable offspring in this catalogue.</p> <p>Key aspects to these rams are their growth rate and carcass. Producing very meaty hind quarters and great general body shape. Wools are a little behind in staple crimp definition but should retain micron and cut into age.</p>
White	Late Cycle Syndicate	<p>This is a syndicate of our best sires.</p> <p>Progeny could be 4 to 5 weeks younger than other rams in the catalogue.</p>

# Sale Ram Listing

Lot	Tag	Sire	Mic	SD	CV	CF	GFW%	BW%
1	210145	HPM 19051	16.7	3.5	21.1	99.1	124	108
2	210021	HPM 20042/053 SYN	17.9	3.4	18.7	99.5	138	117
3	210198	VV	15.6	2.4	15.6	99.8	97	92
4	210173	HPM 17124	17.1	3.5	20.4	99.6	101	97
5	210074	HPP	17.6	2.9	16.3	99.3	97	102
6	210143	HPM 19051	17.1	2.9	17.2	99.2	120	97
7	190431	LATE CYCLE SYN	17.2	3.1	18.0	99.3	97	100
8	200233	HPP	18.1	2.8	15.7	99.3		107
9	210144	HPM 19051	17.8	2.8	16.0	99.3	129	91
10	210070	HPP	17.4	2.6	15.0	99.9	133	95



# Sale Ram Listing

Lot	Tag	Sire	Mic	SD	CV	CF	GFW%	BW%
11	210036	HPM 20042/053 SYN	17.6	2.9	16.7	99.6	115	102
12	210186	HPM 17124	16.6	2.3	14.1	99.5	92	93
13	210081	HPP	18.8	3.4	18.0	99.2	110	108
14	190434	LATE CYCLE SYN	17.2	2.5	14.8	99.8	110	100
15	210130	HPM 20013	19.5	3.2	16.6	99.3	124	107
16	200200	HPP	18.1	2.5	13.8	99.7		95
17	210166	RO W137	18.6	3.4	18.1	99.0	110	95
18	210153	HPM 19051	18.2	3.2	17.8	99.3	138	94
19	210169	RO W137	18.2	3.1	17.0	99.4	106	100
20	210183	HPM 17124	16.1	2.2	13.8	99.6	115	89

# Sale Ram Listing

Lot	Tag	Sire	Mic	SD	CV	CF	GFW%	BW%
21	210076	HPP	20.0	4.0	19.8	99.0	133	114
22	200179	HPM 19051	18.4	3.3	18.1	99.2		99
23	210077	HPP	17.7	3.3	18.7	99.7	120	102
24	210175	HPM 17124	18.0	3.4	18.7	99.2	115	98
25	210156	RO W137	17.2	3.9	22.9	98.7	115	92
26	210048	HPM 20005	18.6	4.0	21.7	98.9	101	105
27	210142	HPM 19051	16.0	3.2	20.1	99.5	115	86
28	210170	RO W137	17.1	3.6	21.2	99.5	115	86
29	210066	HPP	18.3	3.3	18.1	99.4	115	100
30	210131	HPM 20013	17.5	2.8	16.0	99.7	106	105

# Sale Ram Listing

Lot	Tag	Sire	Mic	SD	CV	CF	GFW%	BW%
31	210071	HPP	17.1	2.9	16.7	99.6	110	108
32	210184	HPM 17124	18.0	2.6	14.5	99.7	110	114
33	210127	HPM 20013	16.9	2.6	15.3	99.7	110	102
34	210091	HPP	17.2	2.3	13.6	99.9	110	104
35	190446	LATE CYCLE SYN	16.9	2.7	16.0	99.5	92	95
36	210051	HPM 20005	18.2	3.3	18.4	99.4	110	95
37	210018	HPM 20042/053 SYN	18.0	4.0	22.1	98.9	133	95
38	210079	HPP	17.6	3.1	17.7	99.6	83	112
39	210128	HPM 20013	17.2	3.4	19.6	99.6	115	98
40	200155	HPP	17.9	2.8	15.4	99.8		107

Notes:

**Approximately 60 Grade Rams will be available immediately after the sale in grades of \$1,200 and \$900.**



## Heathfield Poll Merinos

S & L Jarvis  
326 Heathfield Rd, Boorowa NSW 2586

Steve 0427 853 528

Lydia 0407 518 485

[steve.jarvis@bigpond.com](mailto:steve.jarvis@bigpond.com)

[heathfieldpollmerinos.com](http://heathfieldpollmerinos.com)



Cat SL 260922